



# Automating System Refreshes with Libelle System*Copy*

(c) 2020 Libelle AG

# About Libelle



- HQ in Stuttgart, Germany
- Offices in Atlanta, USA and Paris, France
- Develop & market standard enterprise software since '94
- 1,500+ installations at 400+ corporate customers worldwide
- 8 global Fortune 50 customers run Libelle software
- 25% of Libelle customers have >1bn\$ annual revenue

# Libelle Solution Portfolio



## Data Replication

SAP HANA

Oracle/ RAC

SAP ASE

MSSQL

DB2/DPF

SAP MaxDB

Progress DB

MySQL/ MariaDB

dashDB

Flat File Replication

Cloud Replication

## System Refresh Automation for SAP®

Libelle **SystemCopy**

**ClientCopy** add-on

**SystemClone** add-on

**DBCOPY** add-on

## Data Masking & Landscape Management

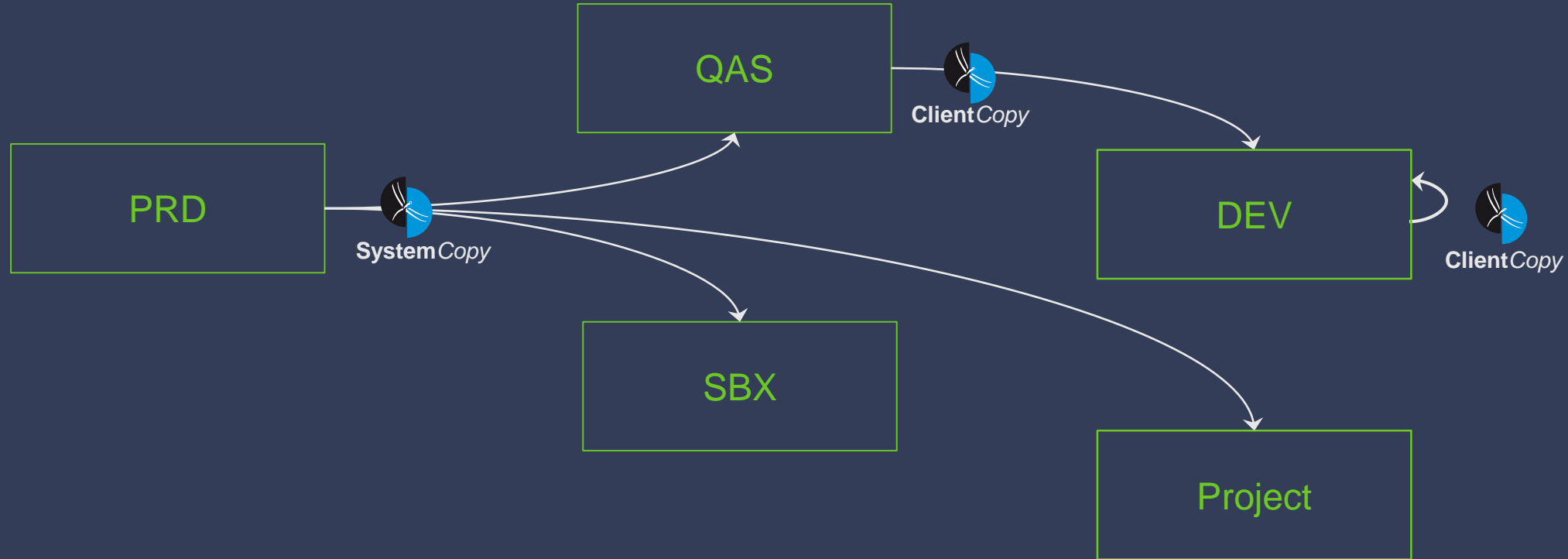
Libelle **DataMasking**

Libelle EDIMON  
IDoc Monitor for SAP

Lift & Shift  
Cloud Migrations

Libelle software standardizes, automates, and optimizes IT operation.

# The Homogeneous System Refresh



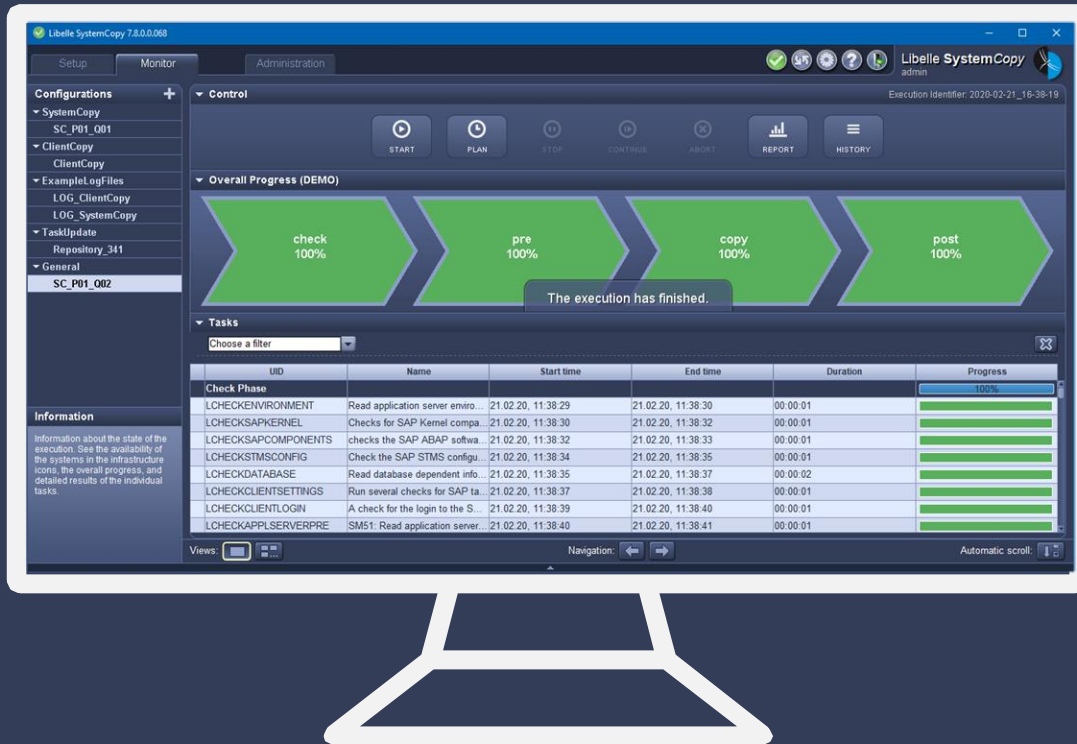
With 'System Refresh', we mean Homogeneous System Copies and Client Refreshes.  
We do not include Data Slicing or heterogeneous migrations.

# Refresh Challenges & Opportunities



Manual refreshes are expensive for the business in multiple dimensions

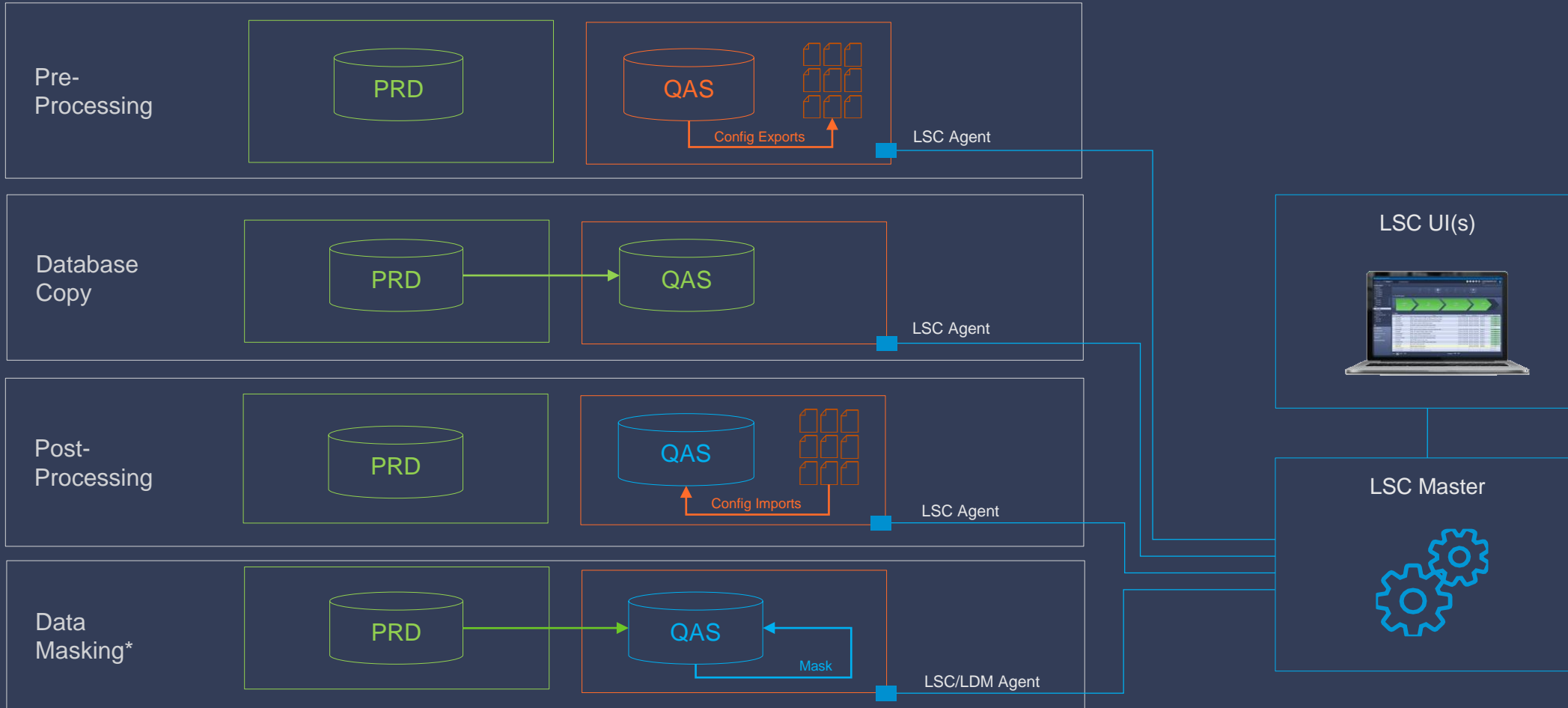
# What is Libelle SystemCopy?



- LSC Software automates and accelerate refreshes end-to-end
- LSC is an automation framework with a modern, role-based UI
- LSC comes with 450+ pre-configured tasks covering 95% of typical refreshes
- LSC embraces automation following SAP standards

LSC has 3 main components: Automation Framework, Task Repository, and Admin UI

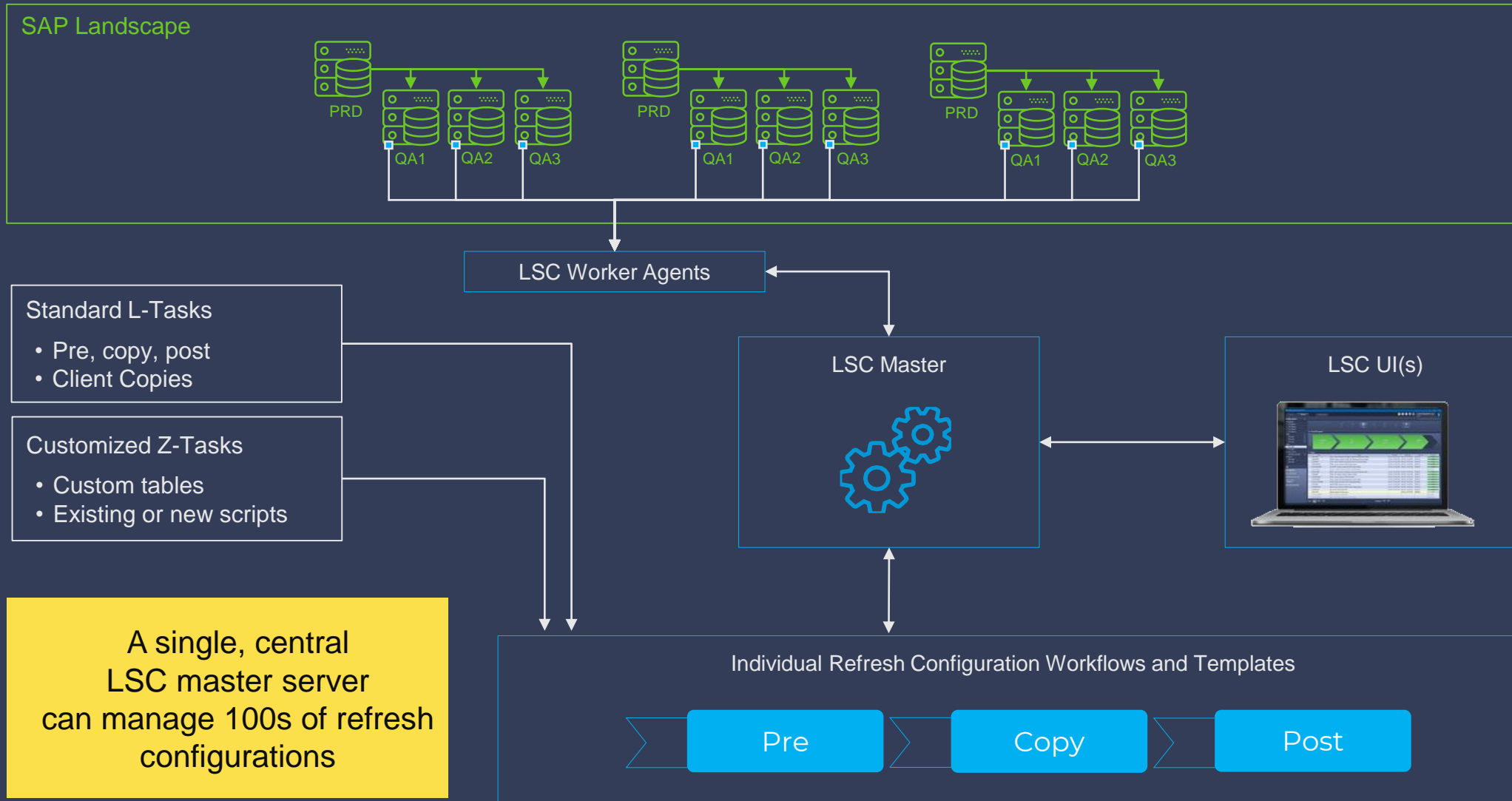
# System Refresh Workflow



Config Data is exported from current QAS, followed by DB copy, followed by config data imports and (optional) masking.

\*Optional. Requires separate Libelle *DataMasking* tool which is integrated in LSC.

# LSC Master/Worker Architecture





# Worker Agent: Task and Connector Types



## Table and DB Operation

Export table content (R3Trans)

Delete table content (R3Trans)

Import table content (R3Trans)

SQL via Libelle DB Connectors

## Unix, Linux, and Windows Scripts

Any shell scripts

PowerShell scripts

Libelle Shell scripts

Python scripts

## Execute SAP Functions

Generic R3Trans tasks

Execute SAP Function Modules

Run SAP executables

## Workflow Management

Interactive tasks (Breakpoints)

Multi-system sync tasks

Email status tasks

All tasks types are generic and can be used for Libelle- or Customer Tasks

# LSC Task Repository: T-Codes and Areas



- |             |              |               |        |          |
|-------------|--------------|---------------|--------|----------|
| ✓ BD54      | ✓ OSS1       | ✓ SCOT        | ✓ SM14 | ✓ SMW0   |
| ✓ BDLS      | ✓ RSA1       | ✓ SDCCN       | ✓ SM28 | ✓ SNC    |
| ✓ BRCONNECT | ✓ RSCUSTA    | ✓ SolMan      | ✓ SM37 | ✓ SP12   |
| ✓ BRCSADMIN | ✓ RSCUSTV3   | ✓ SE03        | ✓ SM38 | ✓ SPAD   |
| ✓ DB/OP\$   | ✓ RZ04       | ✓ SE06        | ✓ SM51 | ✓ SR13   |
| ✓ DB13      | ✓ RZ10       | ✓ SE38        | ✓ SM58 | ✓ SS02   |
| ✓ DB59      | ✓ RZ20       | ✓ SE61        | ✓ SM59 | ✓ ST03   |
| ✓ HANA DB   | ✓ RZ70       | ✓ SE80        | ✓ SM61 | ✓ STMS   |
| ✓ JAVA      | ✓ SAP checks | ✓ SECSTORE    | ✓ SM65 | ✓ STRUST |
| ✓ LC10      | ✓ SAP start  | ✓ SF01        | ✓ SM69 | ✓ THOST  |
| ✓ LDAP      | ✓ SAP stop   | ✓ SICF / HTTP | ✓ SMLG | ✓ TST03  |
| ✓ LPCONFIG  | ✓ SCC4       | ✓ SLDAPICUST  | ✓ SMQR | ✓ WE20   |
| ✓ OAC0      | ✓ SCC7       | ✓ SLICENSE    | ✓ SMQS |          |
| ✓ OAM1      | ✓ SCC8       | ✓ SM02        | ✓ SMT1 |          |

LSC Task Repository provides 450+ pre-configured tasks. Typically, 95% of refresh activity comes 'out of the box'. Especially with SAP HANA, 100% of refresh tasks can be automated

# LSC Task Repository: Areas



## Standard Pre-Processing

- Export/ management of ~70 T-Codes with config data
- System stop sequences for SAP landscapes

## Standard DB Copy Tasks

- Libelle DBCopy tool for Oracle, DB2, MSSQL, HANADB, ASE, MaxDB
- Automated HANADB backup/ restore
- Snapshots for selected tools
- Command Line integration for Backup Tools

## Standard Post-Processing

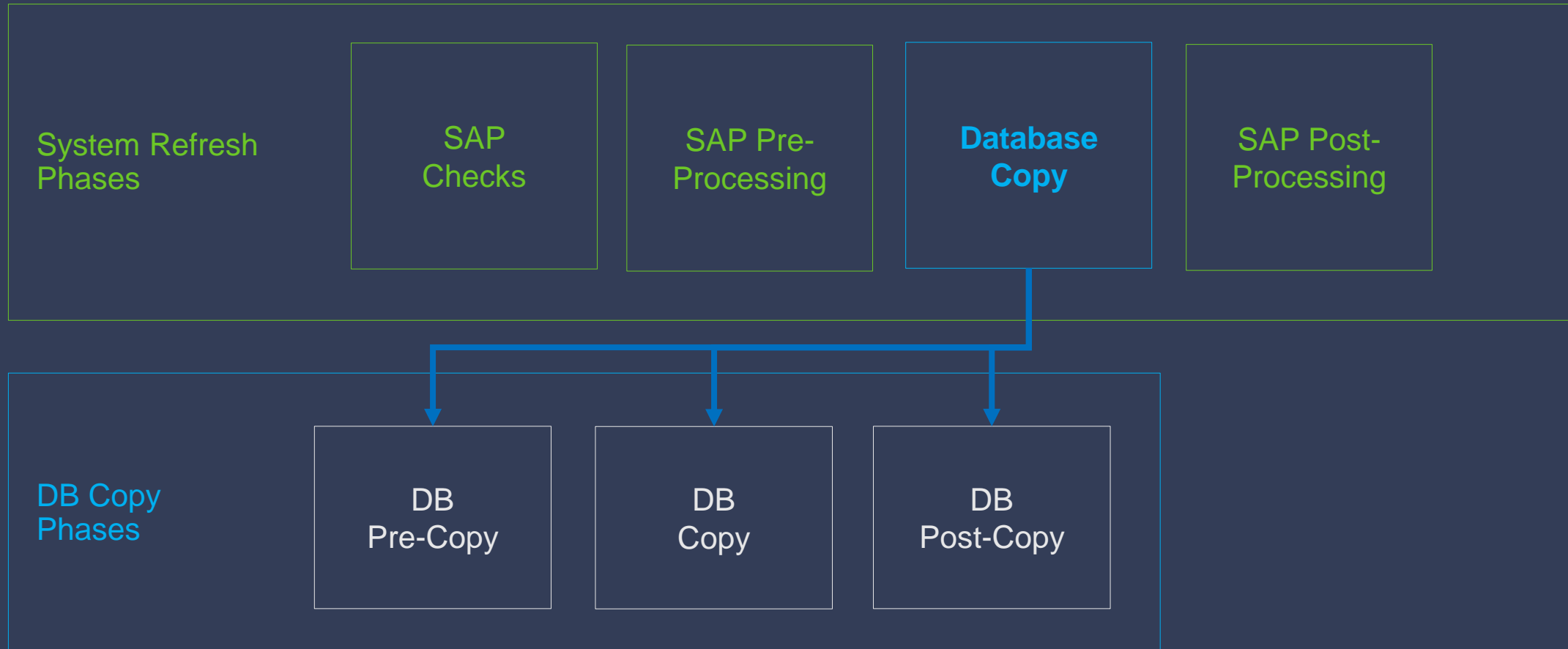
- Import/ management of ~70 T-Codes with config data
- Accelerated BDLS
- TemSe
- System start sequences for SAP Landscapes

## Standard Functional and Cross-Functional Tasks

- BI systems
- SOA Manager
- User messages
- Client-dependent tables
- LiveCache systems
- PI tasks
- Background screens
- Client-independent tables
- CRM middleware
- Tasks for DEV refreshes
- Batch processing
- Etc.
- RSA admin table
- Java import/ export
- Transport deltas

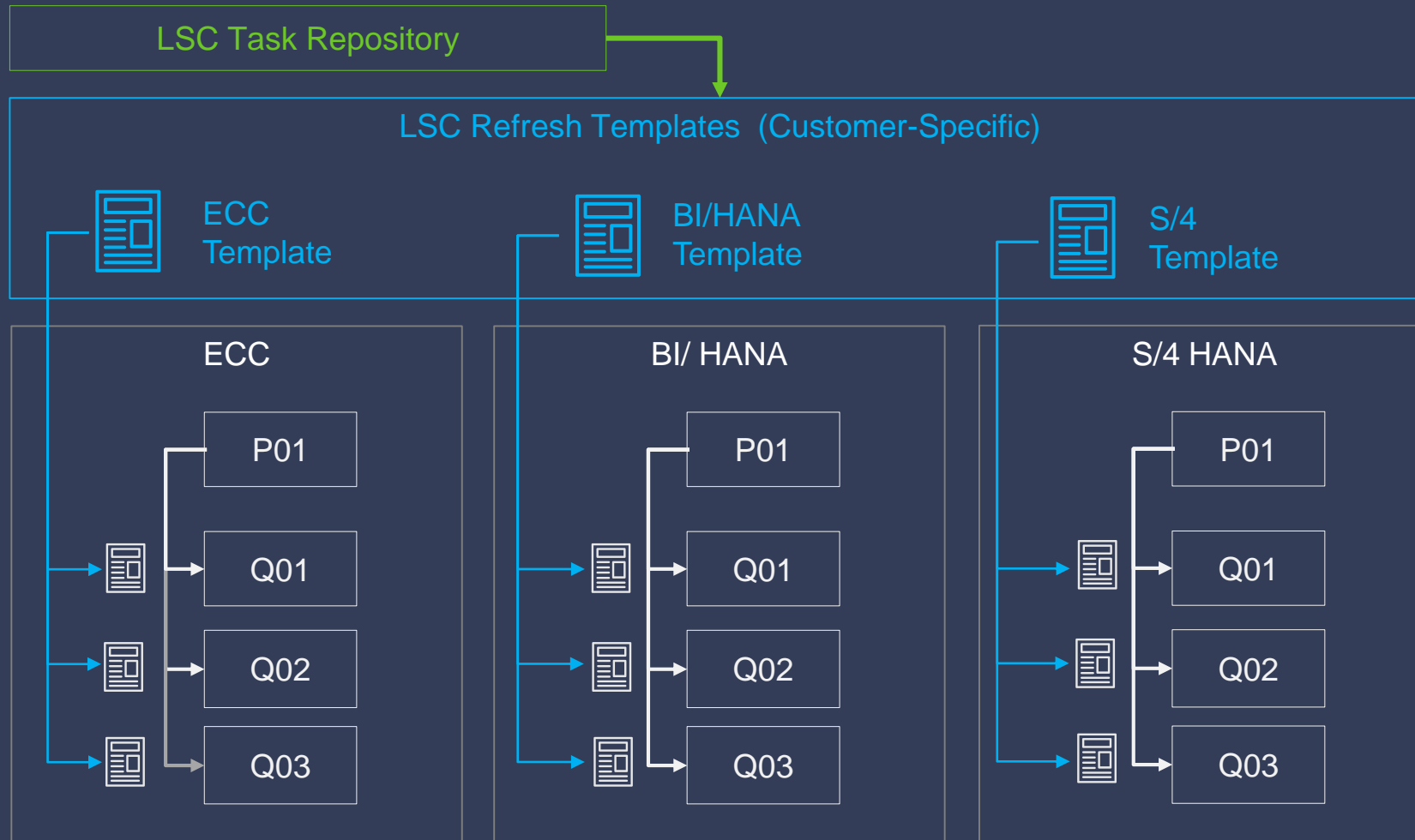
LSC covers typical refresh activity out of the box

# Database Copy Phase Automation



LSC can ... (1) Provide a fully orchestrated DB Copy, (2) Integrate customer scripts, or (3) let customer continue handling the Copy Phase

# LSC Refresh Template Management



During Implementation, customer-specific Master Templates are configured.

Future changes to the configuration can be made in a Master Template and then be mass-pushed to the derived configurations.

# Enterprise Features



- Central LSC Server(s) managing 100s of configuration
- Configuration management, duplication, export, import, etc.
- Change audits
- Refresh history
- Refresh PDF reports with all logs
- LSC Standard Repository
- Role-based UI/ LDAP integrated; LDAPs
- Highly Customizable
- Extensive holistic Security Concept –
  - Digitally signed configurations,
  - Role-based access to configurations,
  - Secure password storage via public/private keys

# LSC Summary



- **Optimize** – Reduce manual overhead by automation
- **Standardize** – Automation forces standardization
- **Reduce Costs** – Do more with less
- **Predictability and Consistency** – Provide predictable and consistent refreshes
- **Traceability** – Each refresh step is documented in detail
- **Reduce Risks** – Reduce Business Risks when deploying new features
- **Faster Deployment** – Deliver Refreshes faster
- **Streamline SAP Operation** – Automate as much as possible
- **Automated Basis Admin:** Difficult to find and retain highly skilled Basis Admins

Speed, Efficiency, and Consistency translate to Cost Savings.  
Automation Driver may be complexity of a single system,  
sheer number of refreshes, or both.